

## TEST RESULTS

Based on your test results you will be offered the most suitable health improvement plan, which may include using DeVita program complexes, taking DeLixir/DeNorma nutritional supplements, using DeMatrix bio-corrective pendants or drinking DeAqua hydrogen water with recommendations for a healthy lifestyle.



Physical activity, healthy nutrition and consistently adhering to your health improvement plan are the most important keys to an active and healthy life.

## NEW HEALTH ASSESSMENT TECHNOLOGIES

- FAST AND ACCURATE testing method
- DETERMINES the body's physical and psycho-emotional condition
- MULTIPLE PROFILES can be created
- HEALTH ASSESSMENT based on key indicators
- HEALTH IMPROVEMENT RECOMMENDATIONS based on your test results
- PERFECT for family and business

### HOW IT WORKS

## DEPULS +



DePuls+ assesses the state of health based on the heart rate. The strength and regularity of the pulse and the number of beats per minute accurately indicate "weak" areas in the body and the psycho-emotional state of a person.



In just 5 minutes DePuls+ evaluates the condition of organs and systems, the stress index, biological age, the balance of the vegetative nervous system, the body's energy potential, and the state of the musculoskeletal system.



The device is used to test the psycho-emotional state, the strength of the person's aura, the degree of openness of each chakra, the activity of the 12 meridians, and the state of the body's organs and systems according to the Wu Xing theory.



Based on the test results, DePuls+ offers the most suitable health improvement regimen, which includes using DeVita program complexes, taking DeLixir/DeNorma nutritional supplements and using DeMatrix bio-corrective pendants.

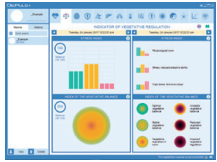
[WWW.DEHOLDING.GR/EN](http://WWW.DEHOLDING.GR/EN)

DeVita technologies are the fastest, easiest, most reliable and modern way of improving your health!



**WINDOW 1 — HEART RATE VARIABILITY INDICATORS**

Here you can see the state of heart rate in the form of an electrocardiogram. The screen also shows the main physiological indicators.



**WINDOW 2 — INDICATOR OF VEGETATIVE REGULATION**

This screen shows the coordination of the nervous system, which provides stability for the body's physical and mental activities



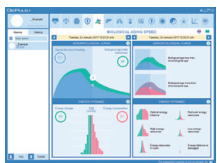
**WINDOW 3 — PSYCHOEMOTIONAL STATE**

This shows the level of brain activity and the degree of tension within the nervous system, as well as the psycho-emotional state at the time of testing.



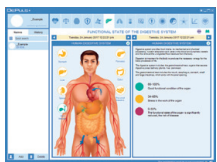
**WINDOW 4 — BODY DEFENSES**

This window demonstrates the immune system's defense level of the person being tested – ie. the body's ability to resist pathogens.



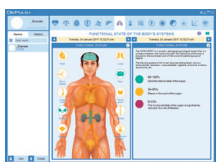
**WINDOW 5 — BIOLOGICAL AGING SPEED**

This displays the correlation of the body's condition with the chronological age of the person being tested, as well as the balance between energy accumulation and energy expenditure.



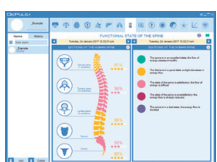
**WINDOW 6 — FUNCTIONAL STATE OF THE DIGESTIVE SYSTEM**

This shows the state of the gastrointestinal organs - stomach, pancreas, liver, spleen, etc.



**WINDOW 7 — FUNCTIONAL STATE OF THE BODY'S SYSTEMS**

Here you can see the state of the nervous, cardiovascular, respiratory, musculoskeletal and other body systems.



**WINDOW 8 — FUNCTIONAL STATE OF THE SPINE**

This window displays the state of different regions of the vertebral column, as well as the strength of energy flow passing through them.



**WINDOW 9 — FUNCTIONAL TEST INDICATORS**

This window shows a summary of the test results as obtained well as a daily activity/biorhythm forecast.



**WINDOW 10 — AURA PORTRAIT**

This displays the power of the human energy field - the aura. It shows the state of their aura's energetic layers, the state of the person's energy field and adaptation reserves.



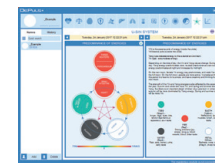
**WINDOW 11 — CHAKRA SYSTEM**

This displays the activity of the person's energy centers – chakras - and the degree of their openness. This determines the energy exchange between the person and the environment.



**WINDOW 12 — MERIDIANS DIAGRAM**

This shows the distribution of energy flowing through the meridians of the internal organs according to the Chinese system of reflexology.



**WINDOW 13 — WU XING SYSTEM**

This window demonstrates the energetic balance of the five elements – Wood, Earth, Fire, Metal and Water –within the body, according to the Chinese Wu Xing theory.



**WINDOW 14 — DYNAMICS OF FUNCTIONAL & ENERGETIC INDICATORS**

This shows the overall results of the person's energy indicators - the state of the chakras, aura and meridians.



**WINDOW 15 — RECOMMENDATIONS FOR HEALTH IMPROVEMENT, USING DEHOLDING PRODUCTS**

Following testing, this window provides comprehensive recommendations for health improvement, using a range of DEHolding products.

Operating languages: English, French, Spanish, Greek, Russian, Turkish, Chinese, Indonesian and Arabic.

Gain in-depth training on the Depuls+ device now at <https://deholding.gr/en/>